

 **BOEING**
COMPONENT
MAINTENANCE MANUAL

TO: ALL HOLDERS OF RAIN REPELLENT SYSTEM RESERVOIR ASSEMBLY COMPONENT
MAINTENANCE MANUAL 30-43-01

REVISION NO. 1 DATED JAN 10/84

HIGHLIGHTS

Pages which have been added or revised are outlined below together with the highlights or the revision. Remove and insert the affected pages as listed and enter Revision No. 1 dated Jan 10/84 on the Record of Revision Sheet.

CHAPTER/SECTION

AND PAGE NO.

INTRODUCTION

1

DESCRIPTION OF CHANGE

Added description of dual coverage in both CMM and OHM.

30-43-01

HIGHLIGHTS

01.1

Page 1

Jan 10/84

**RAIN REPELLENT SYSTEM VISUAL
RESERVOIR ASSEMBLY**

PART NUMBER 69-34511-1,-2

COMPONENT MAINTENANCE MANUAL
WITH
ILLUSTRATED PARTS LIST

30-43-01

TITLE PAGE

Page 1

Jul 10/83

01.1



REVISION RECORD

- Retain this record in front of manual. On receipt of revision, insert revised pages in the manual, and enter revision number, date inserted and initial.

REVISION NUMBER	REVISION DATE	DATE FILED	BY	REVISION NUMBER	REVISION DATE	DATE FILED	BY

30-43-01

REVISION RECORD

01.1

Page 1

Jul 10/83



TEMPORARY REVISION AND SERVICE BULLETIN RECORD

BOEING SERVICE BULLETIN	BOEING TEMPORARY REVISION	OTHER DIRECTIVE	DATE OF INCORPORATION INTO MANUAL

30-43-01

TR & SB RECORD

01.1

Page 1

Jul 10/83


BOEING
 COMPONENT
 MAINTENANCE MANUAL

PAGE	DATE	CODE	PAGE	DATE	CODE
30-43-01			CHECK		
			501	JUL 10/83	01.1
			502	BLANK	
TITLE PAGE			REPAIR-GENERAL		
1	JUL 10/83	01.1	601	JUL 10/83	01.1
2	BLANK		602	BLANK	
REVISION RECORD			REPAIR 1-1		
1	JUL 10/83	01.1	601	JUL 10/83	01.1
2	BLANK		602	BLANK	
TR & SB RECORD			ASSEMBLY		
1	JUL 10/83	01.1	701	JUL 10/83	01.1
2	BLANK		702	BLANK	
LIST OF EFFECTIVE PAGES			ILLUSTRATED PARTS LIST		
*1	JAN 10/84	01	1001	JUL 10/83	01.1
THRU LAST PAGE			1002	JUL 10/83	01.1
CONTENTS			1003	JUL 10/83	01.1
1	JUL 10/83	01.1	1004	BLANK	
2	BLANK				
INTRODUCTION					
*1	JAN 10/84	01.1			
2	BLANK				
DESCRIPTION & OPERATION					
1	JUL 10/83	01.1			
2	BLANK				
TESTING & TROUBLE SHOOTING					
101	JUL 10/83	01.1			
102	BLANK				
DISASSEMBLY					
301	JUL 10/83	01.1			
302	BLANK				
CLEANING					
401	JUL 10/83	01.1			
402	BLANK				

* = REVISED, ADDED OR DELETED

30-43-01
 EFFECTIVE PAGES
 LAST PAGE Page 1
 01 Jan 10/84

TABLE OF CONTENTS

<u>Paragraph Title</u>	<u>Page</u>
Description and Operation	1
Testing/Trouble Shooting.	101
Disassembly.	301
Cleaning	401
Check.	501
Repair	601
Assembly	701
Fits and Clearances (not applicable)	
Special Tools (not applicable)	
Illustrated Parts List	1001

30-43-01

CONTENTS

01.1

Page 1

Jul 10/83



INTRODUCTION

The instructions in this manual provide the information necessary to perform maintenance functions ranging from simple checks and replacement to complete shop-type repair.

This manual is divided into separate sections:

- | | |
|---|------------------------------|
| 1. Title Page | 4. List of Effective Pages |
| 2. Record of Revisions | 5. Table of Contents |
| 3. Temporary Revisions &
Service Bulletin Record | 6. Introduction |
| | 7. Procedures & IPL Sections |

Refer to the Table of Contents for the page location of applicable sections. An asterisked flagnote *[] in place of the page number indicates that no special instructions are provided since the function can be performed using standard industry practices.

The beginning of the REPAIR section includes a list of the separate repairs, a list of applicable standard Boeing practices, and an explanation of the True Position Dimensioning symbols used.

An explanation of the use of the Illustrated Parts List is provided in the Introduction to that section.

All weights and measurements used in the manual are in English units, unless otherwise stated. When metric equivalents are given they will be in parentheses following the English units.

Design changes, optional parts, configuration differences and Service Bulletin modifications create alternate part numbers. These are identified in the Illustrated Parts List (IPL) by adding an alphabetical character to the basic item number. The resulting item number is called an alpha-variant. Throughout the manual, IPL basic item number references also apply to alpha-variants unless otherwise indicated.

This CMM provides data also provided in 707, 727, 737, and 747 Overhaul Manual 30-46-02. This duplication of coverage does not affect the applicability of either manual for shop maintenance of components of airplane models for which each manual has been issued. Both manuals will be revised as necessary to include all pertinent information.

30-43-01

INTRODUCTION

01.1

Page 1

Jan 10/84

RAIN REPELLENT SYSTEM VISUAL RESERVOIR ASSEMBLYDESCRIPTION AND OPERATION

1. The visual reservoir assembly consists of a sleeve, end caps, bolt, gaskets, and float.
2. The visual reservoir assembly is pressurized by air pressure through a passage in the threaded end of the bolt. The fluid passes through a passage in the bolt head. The float provides a visual indication of fluid level in the reservoir assembly.

3. Leading Particulars (Approximate)

Length -- 6 in.
Diameter -- 2 in.
Weight -- 0.6 lb

30-43-01

DESCRIPTION & OPERATION

01.1

Page 1

Jul 10/83

TESTING/TROUBLE SHOOTING| 1. LEAKAGE TEST

- | A. Apply 200 psi moisture-free air for 1 minute while the reservoir assembly is immersed in water. There shall be no leakage.
- | B. Seal reservoir assembly after testing to prevent entrance of moisture or other contaminants.

30-43-01

TESTING & TROUBLE SHOOTING

01.1

Page 101

Jul 10/83

DISASSEMBLY1. Parts Replacement

NOTE: The following parts are recommended for replacement. Unless otherwise specified, actual replacement of parts may be based on in-service experience.

A. Packing (15, IPL Fig. 1)

B. Gasket (45)

2. Disassembly (IPL Fig. 1)

A. Remove parts (15 thru 60) from bolt (5, 10).

30-43-01

DISASSEMBLY

01.1

Page 301

Jul 10/83

CLEANING

1. Wash all metal parts with dry cleaning solvent, specification P-D-680, or equivalent.
2. Dry parts with a clean, lint-free cloth or moisture free air.
3. Wash parts (50, 55, 60, IPL Fig. 1) with mild detergent. Rinse with clear water.

30-43-01CLEANING
Page 401
Jul 10/83

01.1

CHECK

1. Check all parts for obvious defects in accordance with standard industry practices.
2. Examine all metal parts for cracks, burrs, and corrosion.
3. Examine sleeve (60, IPL Fig. 1) for cracks and discoloration.
4. Examine all threads for crossthreading and stripping.

30-43-01

CHECK

01.1

Page 501

Jul 10/83


BOEING
 COMPONENT
 MAINTENANCE MANUAL
REPAIR-GENERAL| 1. Content

- | A. Repair, refinish, and replacement procedures are included in a separate repair section as follows:

<u>P/N</u>	<u>NAME</u>	<u>REPAIR</u>
--	MISC PARTS REFINISH	1-1

| 2. Standard Practices

- | A. Refer to the following standard practices as applicable, for details of procedures in individual repairs.

| 20-30-02 Stripping of Protective Finishes
 | 20-41-01 Decoding Tables for Boeing Finish Codes

30-43-01

REPAIR-GENERAL

01.1

Page 601

Jul 10/83

MISCELLANEOUS PARTS REFINISH - REPAIR 1-1

1. Repair of parts listed in Fig. 601 consists of restoration of the original finish.

IPL FIG. & ITEM	MATERIAL	FINISH
<u>Fig. 1</u>		
Cap (40)	Al alloy	Chromic acid anodize and apply one coat of BMS 10-11, type 1 primer (F-18.13). Apply BMS 10-60 flat enamel (SRF-14.9817-8925).
Cap (40)	CRES	Prepare surface and passivate (F-8.07)

Refinish Details
 Figure 601

30-43-01

REPAIR 1-1

01.1

Page 601

Jul 10/83

ASSEMBLY

- | 1. Assembly (IPL Fig. 1)
 - | A. Assemble parts (15 thru 60) on bolt (5, 10). Tighten nut (25, 30) to a torque value of 50 to 70 pound-inches.
 - | B. Test per TESTING/TROUBLE SHOOTING.
- | 2. Wrap assembly in vapor-barrier paper and tag with test date. Reference: 20-44-02, Temporary Protective Coatings.

30-43-01ASSEMBLY
Page 701
Jul 10/83

01.1

ILLUSTRATED PARTS LIST

1. This section lists and illustrates replaceable or repairable component parts. The Illustrated Parts Catalog contains a complete explanation of the Boeing part numbering system.
2. Indentures show parts relationships as follows:

Assembly

Detail Parts for Assembly

Subassembly

Attaching Parts for Subassembly

Detail Parts for Subassembly

Detail Installation Parts (Included only if installation parts may be returned to shop as part of assembly)

3. One use code letter (A, B, C, etc.) is assigned in the EFF CODE column for each variation of top assembly. All listed parts are used on all top assemblies except when limitations are shown by use code letter opposite individual part entries.
4. Letter suffixes (alpha-variants) are added to item numbers for optional parts, Service Bulletin modification parts, configuration differences (except left- and right-hand parts), product improvement parts, and parts added between two sequential item numbers. The alpha-variant is not shown on illustrations when appearance and location of all variants of the part are the same.
5. Service Bulletin modifications are shown by the notations PRE SB XXXX and POST SB XXXX.
 - A. When a new top assembly part number is assigned by Service Bulletin, the notations appear at the top assembly level only. The configuration differences at detail part level are then shown by use code letter.
 - B. When the top assembly part number is not changed by the Service Bulletin, the notations appear at the detail part level.

6. Parts Interchangeability

Optional
(OPT)

The parts are optional to and interchangeable with other parts having the same item number.

Supersedes, Superseded By
(SUPSDS, SUPSD BY)

The part supersedes and is not interchangeable with the original part.

Replaces, Replaced By
(REPLS, REPLD BY)

The part replaces and is interchangeable with, or is an alternate to, the original part.

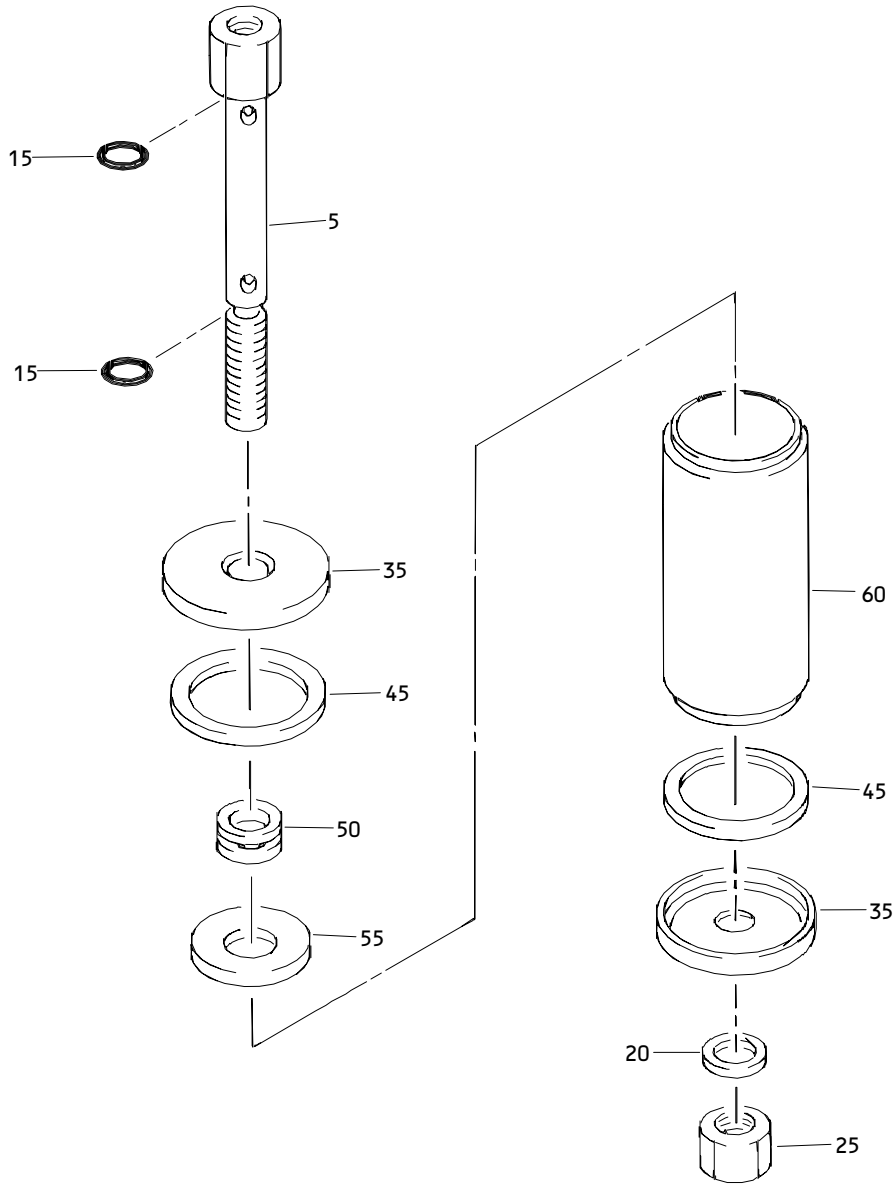
30-43-01

ILLUSTRATED PARTS LIST

01.1

Page 1001

Jul 10/83



Visual Reservoir Assembly
 Figure 1

30-43-01

ILLUSTRATED PARTS LIST
 01.1 Page 1002
 Jul 10/83


BOEING
 COMPONENT
 MAINTENANCE MANUAL

FIG. & ITEM	PART NO.	AIRLINE PART NUMBER	NOMENCLATURE 1234567	EFF CODE	QTY PER ASSY
01-					
-1	69-34511-1		RESERVOIR ASSY-VISUAL	A	RF
-1A	69-34511-2		RESERVOIR ASSY-VISUAL	B	RF
5	69-34510-1		.BOLT	A	1
-10	69-34510-2		.BOLT	B	1
15	MS28778-4		.PACKING		2
20	MS28777-4		.GASKET		1
25	AN6289-4		.NUT	A	1
-30	AN6289W4		.NUT	B	1
35	66-22264-1		.CAP	A	2
-40	66-22264-2		.CAP	B	2
45	66-22266-1		.GASKET		2
50	NAS557-10B		.GROMMET		1
55	66-22267-2		.FLOAT		1
60	66-22265-1		.SLEEVE		1

30-43-01

ILLUSTRATED PARTS LIST

01.1

Page 1003

Jul 10/83